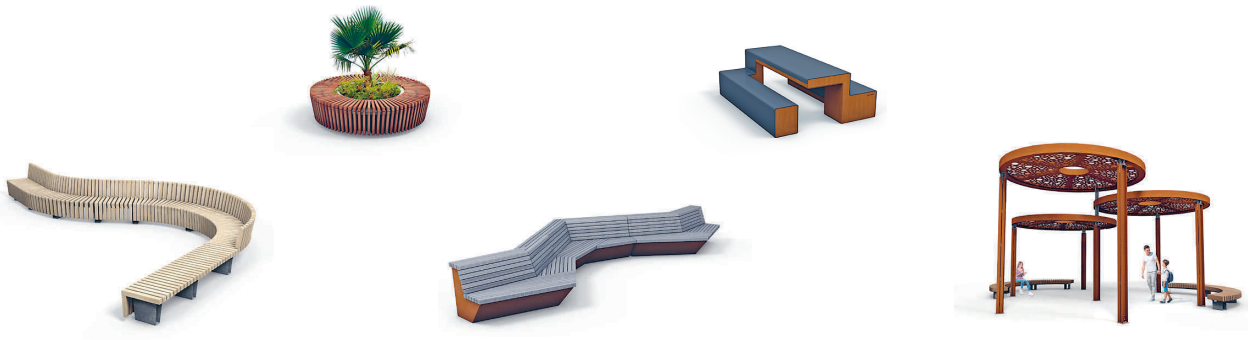


STREETLIFE NEW PRODUCTS 2024-2025



STREETLIFE NEW PRODUCTS 2024-2025

Streetlife is a design driven company with a passion for creating innovative elements for public space. We create products that have a natural style, using the landscape as a starting point for our design. Innovation and creativity are the cornerstones of our progress. Our collection consists of a wide range of Street Furniture, Tree Products & Green Solutions, Shades & Shelters and Pedestrian Bridges. This lookbook displays our newest product designs for 2024-2025.

Streetlife's collection is created in collaboration with landscape architects for projects in many cities. As a designer and supplier of products, we not only consider it a privilege to actively collaborate with you on your ideas and concepts, but also relish the challenge of working with prominent architects and municipal bodies towards the creation of new, durable, and extraordinary environments.

SUSTAINABILITY, GOALS & AMBITIONS

Sustainability in the design and definition of products has been high on Streetlife's agenda for many years. Simple but elegant modular building blocks and standardisation of the wood dimensions of street furniture allow for efficient use and reuse of materials. Streetlife promotes the use of materials without harmful chemical additives, uses new but also recycled FSC hardwood and develops ingenious solutions to extend product life, such as the 'Streetlock' system. All these design choices contribute decidedly to the high quality and sustainability of Streetlife products.

Responsible use of materials remains essential to reduce our impact on the environment, improve recycling possibilities and preserve materials and natural raw materials in the supply chain. Streetlife aims to be an inspiration for circular products in public spaces while preserving the distinctive design and functionality of these products. In addition, Streetlife provides more insight into the overall impact of its materials in the areas of Sustainability, Longevity and Circularity with our Environmental Impact Sheets (EIS).

STREETLIFE® All copyrights and intellectual property rights, including trademarks, patents and copyrights, remain the property of Streetlife and are explicitly reserved. No part of this brochure may be reproduced without prior written permission from Streetlife.

Streetlife BV strives to respect the rights of third parties. If we have inadvertently used materials without acknowledgement, we will correct the omission immediately upon notification.



ROUGH & FINE BENCHES



BOBBY BENCHES

The Bobby Benches have a completely unique design and are monolithic volumes of steel. As standard, the Bobby Benches are provided with a powder coat to prevent staining: Two-Tone CorTen or a combination of powder coating and Corten.

The Bobby Benches are virtually indestructible. The Bobby Lounger has an extended seat and a tilted backrest. The sculptural Bobby Picnic Set has a continuous shape and is very easy to sit down at. The accompanying BobbyQ barbecue table comes in a single or double version with stainless steel grill grates.



Bobby Lounger



BobbyQ Double



Bobby Bench with backrest

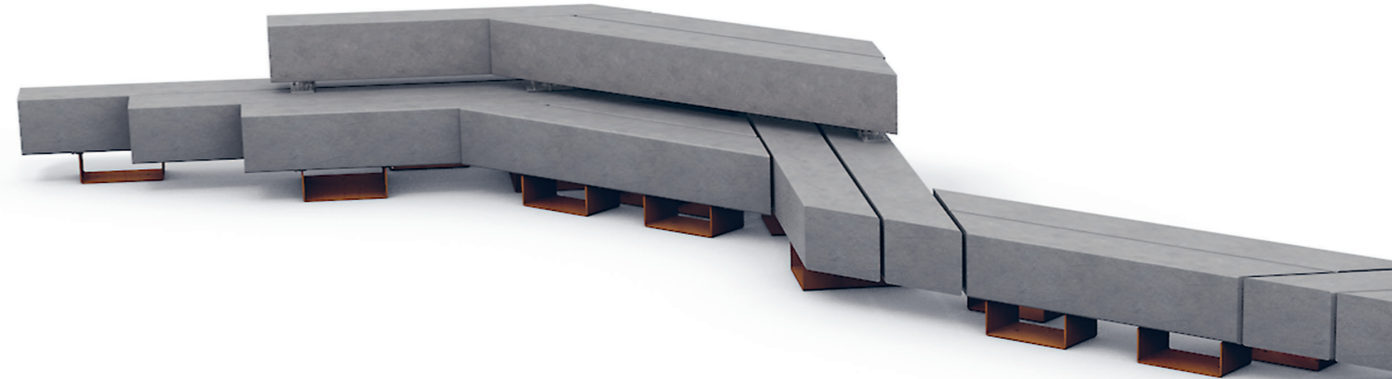


Bobby Picnic Set



Edge detail

DRIFTER MEET&LEARN STRUCTURES



Drifter M&L Structure in Lava Grey recycled plastic



Drifter M&L Structure in upcycled wood



Drifter M&L Structure angular arrangement

Drifter Structures can now also be configured at an angle, creating the Drifter Meet&Learn Structures. This gives numerous new possibilities such as a theatre setup with connected beams. These are very suitable for outdoor meetings or for universities and schools. Streetlife is happy to help you develop these unique structures.

The Drifter Range uses characteristic wood or anthracite Lava Grey beams of approx. 30x30 cm | 11.8"x11.8". Lava Grey is a wood-free alternative made of recycled household plastic with a rough surface structure. The wood beams are made of upcycled wood (FSC 100% Recycled) or core hardwood (FSC 100%). The irregularities and cracks give this wood its appealing character.

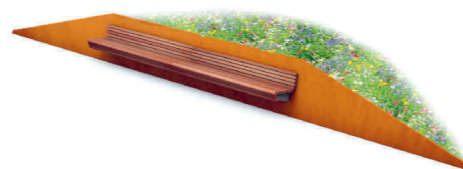
CLIFFHANGER WALLS



Cliffhanger Walls in CorTen with backrest



Cliffhanger Walls in Accoya



Cliffhanger Walls Linear

Cliffhanger Walls are a retaining wall solution as well as a green bench. The retaining walls provide more planting depth from ground level, with a sloping gradient. The system is modular and has elegant corner solutions. The Cliffhanger benches optionally have a low slatted backrest attached to the wall.

The system is semi-customisable; in consultation between Streetlife and the designer, the right dimensions and design can be determined.



Edge detailing of the Cliffhanger Bench

CLIFFHANGER SEATS

The Cliffhanger Series has been expanded to include single seats, which makes a very light, floating impression due to its single support. This support can be made of galvanized, Corten or powder-coated steel.

The characteristic rounded corner slats and the overhanging flanges give the Cliffhanger Series a high-quality appearance. As an alternative to hardwood, the Cliffhanger Seat can also be made of FSC Accoya wood or Bamboo Brown. Bamboo Brown ages naturally, similar to hardwood, with a silver-grey grain.



Cliffhanger Seat in FSC Accoya



Cliffhanger Seat in Bamboo Brown

ROUGH&READY ODDS&ENDS MIX

The Rough&Ready Odds&Ends benches use leftover, residual pieces of wood, repurposing waste from Streetlife's production. By means of sturdy pin connections, the desired seat depth of 50 or 60 cm | 19.7" or 23.6" can be created with two pieces of wood.

By using All Black (recycled industrial plastic) accents, the pattern and reuse of residual materials is emphasized. A maximum of two All Black parts per linear meter are applied (see images). The standard Rough&Ready accessories can be used on an Odds&Ends bench, such as a backrest, armrest or USB Power Charger or USB Wireless Charger.



Rough&Ready Curved Odds&Ends



Solid Disc Picnic Set

SOLID DISC PICNIC SET & SOLID CIRCULAR PICNIC SYSTEM

The *Solid Disc Picnic Set* is a picnic set in which the top (Ø 150 cm | 59.1") and the seat (Ø 220 cm | 86.6") are connected. The set is therefore movable as a whole and stands solid on its own.

The *Solid Circular Picnic System* is a larger round picnic table. The circular Solid Bank has a diameter of at least 4 meters. The top has the same depth as the seat, and can also serve as a raised seat in addition to being a table. By placing the Picnic System around a monumental tree, it also offers protection for the tree. By interrupting the bench, the picnic sets become wheelchair accessible.

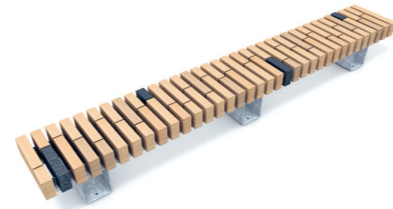
Both picnic sets can be made of FSC hardwood as well as Cloudy Grey recycled plastic.



configurations with continuous table



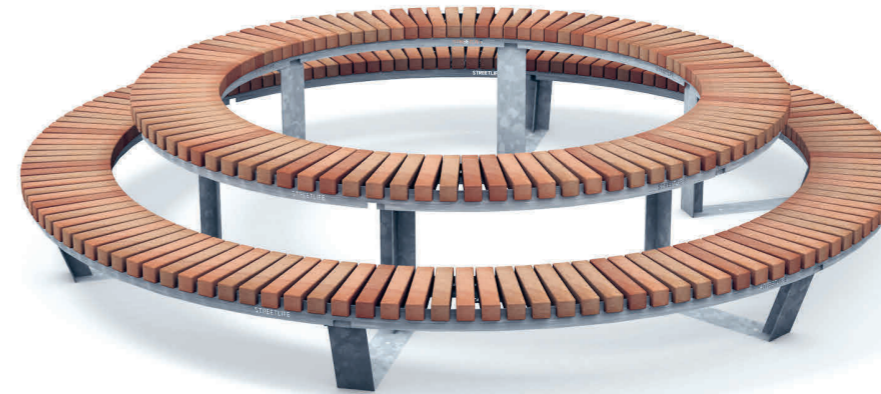
Rough&Ready Curved Odds&Ends Mix



Rough&Ready Linear Odds&Ends Mix



Integrated USB Wireless Charger



Solid Circular Picnic System in Cloudy Grey



Solid Circular Picnic System in FSC hardwood



Solid Skirt Seat & Cube

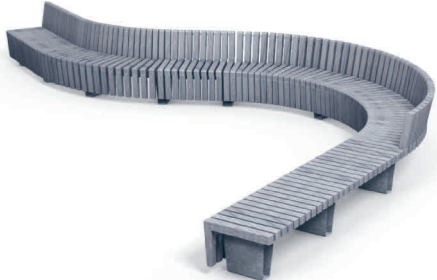
SOLID SKIRT CURVED BENCHES

The Solid Skirt Curved Benches are freestanding, continuous Solid Skirt Benches that follow the lines in the landscape. This bench is also available as a Top Seat, for mounting on an existing stone or concrete base.

The optional backrest accentuates the flowing movement. Where the beams of the seat merge into the legs, the steel detail links their connection. The bench can be made of FSC hardwood, FSC Accoya wood or the recycled plastic TWIN material Cloudy Grey. A wireless charger integrated into the beam is also possible.



Solid Skirt Curved Bench in Accoya



Solid Skirt Curved Bench in Cloudy Grey

SOLID SKIRT SEATS & CUBES

The Solid Skirt is recognizable by the refined detailing where the seat merges into the legs, which is emphasized by a steel accent where the wood connects. The steelwork is carried out in Corten, galvanized or powder-coated steel. The Solid Skirt Seat comes in two different versions. The chair version has a backrest and appears to levitate due to the open 'floating' construction. The 'Cube' is available in two different sizes. The beams are made of FSC hardwood, FSC Accoya wood or the recycled plastic TWIN material Cloudy Grey.



Solid Skirt Seat in Accoya - Solid Skirt Cube in Cloudy Grey - Solid Skirt Cube in hardwood



Solid Skirt Curved Bench with LED-lightning



Solid Skirt Curved Bench with backrest

SOLID SKIRT CURVED WALLS

The Solid Skirt Curved Walls are a combination of the beautiful Solid Skirt Bench with a high steel backrest doubling as a retaining wall, which shields you from the environment and can edge a higher plant compartment. It is a modular, prefabricated, system. The retaining wall has a standard height of 120 cm | 47.2" and is made of powder coated steel: in TwoTone or in a classic RAL colour. A CorTen wall can be used with the addition of a wooden backrest against the steel wall.

The Solid Skirt Curved Walls are based on our Solid 7x7 cm | 2.8"x2.8" slats. The skirt is angled backwards, to leave more room for peoples' legs. The back is optional. The bench can be made of FSC hardwood, FSC Accoya wood or the recycled plastic TWIN material Cloudy Grey. In consultation with the landscape designer, our team will determine the correct dimensions of the system.



Solid Skirt Curved Walls in Accoya

Solid Skirt Curved Walls with backrest in Cloudy Grey



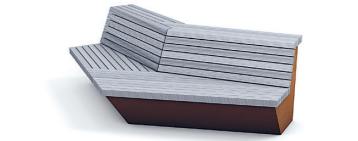
SOLID WING BENCHES

The Solid Wing Benches are modular elements that allow the landscape designer to create various shapes by switching the benches directions. There is an 'Inner-' and 'Outer Module' where the benches run away at an angle. The slanted back creates a playful effect in the seat. These unique benches are ideal for larger squares or as edge termination for planting areas or raised beds. Due to the deep back, the bench looks voluminous, and one can sit on two levels.

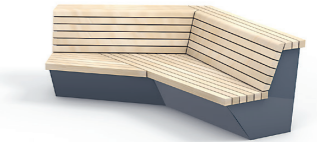
These special benches are based on our Solid 7x7 cm | 2.8"x2.8" slats. Versions can be made of FSC hardwood, Cloudy Grey (recycled plastic & textile mix) or FSC Accoya wood. The closed base is angled, leaving more room for peoples' legs.



Configuration of Solid Wing Benches



Solid Wing Bench Outer Module in Cloudy Grey



Solid Wing Bench Inner Module in Accoya



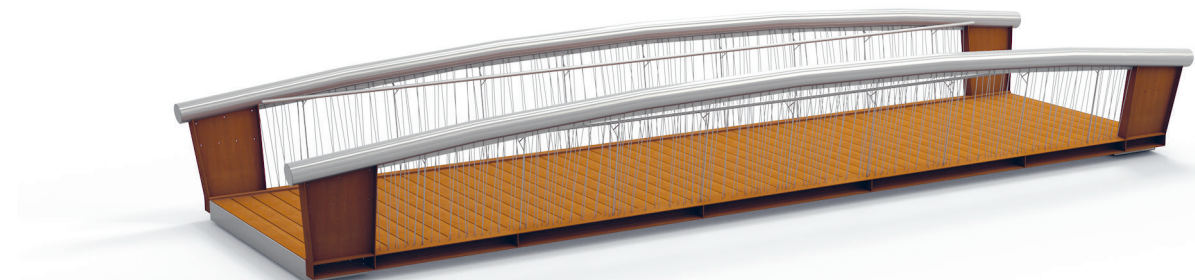
configurations



COCOON BRIDGE (EU only)

Streetlife's Bridges Collection is a very special part of the design range. These small pedestrian and bicycle bridges are designed, produced and installed by Streetlife. All Streetlife Bridges are engineered to local standards and checked by external engineers to ensure compliance with the relevant national legislation. They are architecturally designed bridges with a timeless character.

The Bridges are fitted with your choice of decking from our Decking Systems. In addition to more conventional decking systems we have developed the Cordeck® system. (See photo on the inside cover for reference)



MAJOR TOM BOWIE BRIDGE

Parc de Freudenstadt - Courbevoie Paris, FR

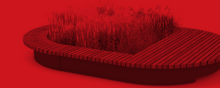
design: In Situ Paysage & Urbanisme
products: Rough&Ready Curved Benches
Rough&Ready Loungers

Lyon-based landscape architects In Situ Paysage & Urbanisme designed this green oasis in Courbevoie – an area that affords respite from the heat due to the planting of 50 new trees, complementing the existing trees, the use of water-permeable paving and the installation of a large dry fountain with 226 water jets. Large Rough&Ready Loungers have been placed around the fountain – the beating heart of the park – and ensure unobstructed views of people playfully enjoying the water. Rough&Ready Curved benches follow the concentric layout of the water feature and are arranged in multiple rows, with and without backrests.

GREEN BENCHES, TREE PLANTERS & GRILLES



SOLID GREEN PICNIC SET
with Green Screens



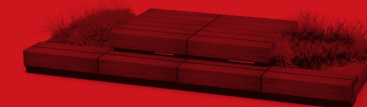
MOBILE GREEN ISLE
Round Modules



DRIFTER
Big Green Bench



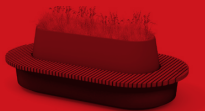
GLOBE TREE PLANTER
3D printed



DRIFTER
Mobile Green Isles



SYNTHETIC CONE
Waste Brown



GREEN OBLONG
Benches



MOBILE GREEN ISLE
with Green Screen



GREEN BIKE
Organiser



GREEN CIRCULAR
Skirt Benches



GREEN CIRCULAR SKIRT BENCHES

The Green Circular Benches feature FSC hardwood or Bamboo Brown Skirt seats, which creates a warm look. There is a high and a low version of the composite base and it is finished in a RAL colour as standard. These Green Circular Benches fit very well in outdoor areas, but are also particularly suitable for interiors, such as for hotels and shopping malls.

The Green Circular Skirt Benches have a diameter of 180 cm | 70.9" and 230 cm | 90.6". The dimensions for the wooden slats of the seat and Skirt are 57x35 mm | 2.2 "x1.4". Besides FSC hardwood, Bamboo Brown is the TWIN option for these benches.



Green Circular Skirt Bench with and without backrest

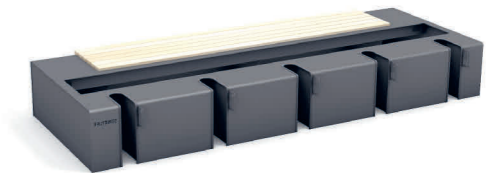


Close-up of the rubber band detailing on the Green Bike Organiser

GREEN BIKE ORGANISER



Solid Seat Blocks Bike Organiser in CorTen



Solid Seat Blocks Bike Organiser in powder coated steel with seating

The Green Bike Organiser is a green bicycle parking solution that can be integrated into Solid Seat Blocks. The system can be applied on one or two sides, with or without seating edges. The recesses are fitted with rubber bumpers to protect the bike frame.



MOBILE GREEN ISLE ROUND MODULES

The Mobile Green Isles (MGI) Round Modules are extensions to the existing MGI range. The half circular movable planters, with integrated hardwood or Cloudy Grey seating and podium sections are prefabricated and installed in no time. The basic construction is made of thick sheet steel in CorTen or powder coated in RAL Classic colour.

The semi-circular Round Modules are attached to other planters by their flat side. Straight MGI modules can also be placed between the semi-circular modules for an elongated arrangement. The seating surfaces consist of Solid slats made of FSC hardwood or recycled plastic Cloudy Grey (7x7 cm | 2.8 "x2.8").



MOBILE GREEN ISLE with GREEN SCREENS

The Green Screen module is an accessory for the Mobile Green Isle (MGI) System and is applicable to all MGI modules with a planting compartment. The MGI Green Screens consist of a vertical wall of steel strips made of CorTen- or powder-coated steel, for climbing plants. Adding a canopy creates even more shade and cooling. The MGI modules fitted with Green Screens remain mobile; this offers a special way to create (temporary) green partitions and more intimate spaces.

The seating surfaces consist of Solid slats made of FSC hardwood or recycled plastic Cloudy Grey (7x7 cm | 2.8 "x2.8").



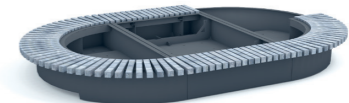
MGI with Green Screens & Cloudy Grey seating



MGI with Green Screens & hardwood seating



MGI Round with Cloudy Grey seating



Various configurations with MGI Round modules

SOLID GREEN PICNIC SET with GREEN SCREENS

Solid Green Picnic Sets are a green version of the Solid Picnic Sets, available in two variants. The base is a connecting support for the table as well as a planter for flowering plants. In addition, by adding Green Screens, climbing plants can grow, creating a Shade Structure.

The support /planter can be finished in powder coated or CorTen steel. The table top and benches are made of FSC hardwood or Accoya. The lengths of the picnic sets are from 468 cm | 184.3”.



Solid Green Picnic Set with Green Screens



Solid Green Picnic Set

GREEN OBLONG BENCHES

The Green Oblong Benches, with or without a back, are a variant of the Green Circular Benches. The oblong is elongated, offering more seating and green space. These green benches are especially suitable for shopping malls and hotels. The modest width of 145 cm | 57.1” makes the Green Oblong Benches suitable for shopping streets and on pavements.

The precast elements are made of fibreglass-reinforced composite, coated in a RAL colour. The pre-assembled seat can be made of FSC hardwood or bio-based Bamboo Brown. The slats (35x57 mm | 2.2 “x1.4”) are integrated into the construction.



Green Oblong Benches



Green Oblong Benches with various seating materials

DRIFTER BIG GREEN BENCHES



Drifter Big Green Benches in characteristic wood or Lava Grey



Drifter Tree Isles

As an extension to the varied Drifter range, now there is the Drifter Big Green Bench. Drifter Big Green Benches are mobile planters with a robust seating edge. The Drifter seats can be realised on one or more sides.

There are numerous irregularities in the characteristic wood. The Drifter Range uses beams of approx. 30x30 cm | 11.8"x11.8". Anthracite grey Lava Grey beams are a wood-free alternative, made from recycled household plastic waste with a rough surface texture.

DRIFTER MOBILE GREEN ISLES



Configuration of Drifter Mobile Green Isle modules

The popular Solid Mobile Green Isles now have a sturdy variant in the Drifter Range. The chunky 30x30 cm | 11.8"x11.8" beams give the mobile islands a tough, indestructible look. The modules consist of seating with planters on one or two tiers.

The size per module is 150x300 cm | 59.1"x118.1". Using the Streetrail system, set-ups can be easily and quickly linked together on existing paving. The base elements are made of CorTen steel or powder coated steel. The benches can be finished in characteristic wood or in Lava Grey from recycled household plastic.



Drifter Mobile Green Isles - various modules

SYNTHETIC CONE WASTE BROWN

The Synthetic Cones are available in 5 colours as standard. A sustainable alternative is a Cone in Waste Grey or Waste Brown material. Waste Grey and Waste Brown consist of 55% recycled plastic waste and 45% virgin material. The recycled plastic waste mainly consists of HDPE (High Density Polyethylene). This recycled plastic waste is partly waste from Streetlife's own manufacturing processes.

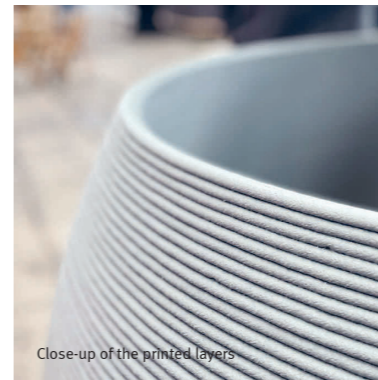
The Waste Brown Cone has a grain structure and is brown in colour from a distance. Up close, the small pieces of recycled plastic are visible, creating a contemporary, sustainable image.



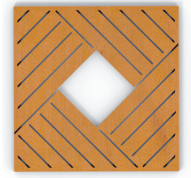
GLOBE TREE PLANTER 3D PRINTED

Produced with a 3D printer, the Globe Tree Planter 3D Printed is made from (UV stable) recycled household plastic waste, reinforced with a very small percentage of glass fibre. The Globe Planter 3D Printed is an alternative to the CorTen steel Globe Planter and is constructed from unique, robust, printed layers of 8 mm | 0.3" high and 25 mm | 1" thick, providing strength and sturdiness for this extra large tree planter. The printing process reveals small irregularities in the print layers, giving each Globe its unique look.

Optionally, the tree planter can be fitted with Treetec® Bottom Up tree care system. Standard in light grey and dark anthracite.



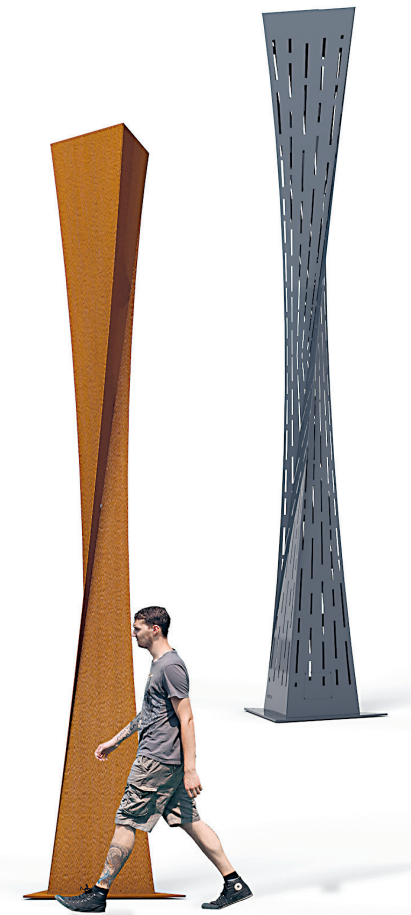
Shades and Pillars are the bigger, more structural elements from the Streetlife Collection. Linear Shades can be erected in both straight and curved formats, creating places to shelter, rest or relax. Meanwhile the new Circular Shade is more playful in its configuration. The new Twisted Pillar is a remarkable design, adding an iconic vertical element to the existing series of pillars. The Streetlife Tree Grilles all feature patterns with a graphic element. A Tree Grille can be fitted with a Tree Guard in the same colour as the grid. The Tree Grilles and Guards are available in both round and square designs.



TREE GRILLE DIAPHRAGM



CIRCULAR SHADE ENSEMBLE



TWISTED PILLAR

STREETLIFE

Head Office

Herengracht 36
2312 LD Leiden
The Netherlands

T +31 (0)71 333 33 33
E streetlife@streetlife.com

STREETLIFE United Kingdom & Ireland

T +44 (0)20 30 20 1509
E enquiriesUK@streetlife.com

STREETLIFE Deutschland

T +49 (0)32 213 22 22 62
E Auskunft@streetlife.com

STREETLIFE France

T +33 (0) 1 83 71 01 71
E demandes@streetlife.com

STREETLIFE Studio Scandinavia

Malmö, Sweden
T +46 (0)41 677 50 53
E scandinavia@streetlife.com

STREETLIFE USA

Philadelphia, PA
T +1 215 247 0148
E usa@streetlife.com

STREETLIFE Canada

T +1 484 496 8281
E canada@streetlife.com

STREETLIFE Australia

Sydney
T +61 2 7908 6513
E australia@streetlife.com

STREETLIFE New Zealand

E newzealand@streetlife.com

FSC® licence number: FSC-C105477

 carbon neutral print production | NL-001-MKBB2CX

  STREETLIFE BV  [streetlifedesign](https://www.instagram.com/streetlifedesign)



Honaité-2022 NL



Reims FR



Chicago USA